

A1

## "Cardinal" by Phyllis Dobbryn Adams



Phyllis Dobbryn Adams' art evokes the natural beauty of New England. In this image she presents a male cardinal on winter branches against a bright background. This cheerful piece is 8" x 8" acrylic on canvas gallery wrapped, ready to hang

Donated by: Phyllis Dobbryn Adams  
Market Value of Donation: \$500

A2

## "Cottages" by Phyllis Dobbryn Adams



Phyllis Dobbryn Adams' art evokes the natural beauty of coastal New England, the ocean, the beaches and the wildlife as constant inspiration. She pares down and finds the essence of the subject matter by abstracting shapes and exaggerating color. 12" x 12" acrylic on canvas, gallery wrapped, and ready to hang.

Donated by: Phyllis Dobbryn Adams  
Market Value of Donation: \$600

A3

## Carved Bottle by Cali Almy



Handcrafted by Cali Almy, this carved bottle features delicate geometric designs and is 8.5” tall. Almy's ceramics are inspired by landscape and created with function in mind. Everything is handmade and decorated, and while she works in series no two pieces are exactly alike.

Donated by: Cali Almy

Market Value of Donation: \$150



A4

# Metal Sunflower Outdoor Sculpture by Whitmore Boogaerts



Whitmore Boogaerts creates indoor and outdoor sculptures, furniture, wall pieces and mobiles. This is an outdoor sculpture, made of steel and stands 45" tall. With a background in civil engineering, Whit has enjoyed working with art consultants and architects to design pieces that not only suit the environment but also add a new dimension. He continues to combine balance and design with strong craftsmanship. The goal of each piece is to let nature itself flow through the work.

Donated by: WB Sculpture Studio / Whitmore Boogaerts  
Market Value of Donation: \$800



A5

## "Beetle Cat Platter " by Daphne Borden

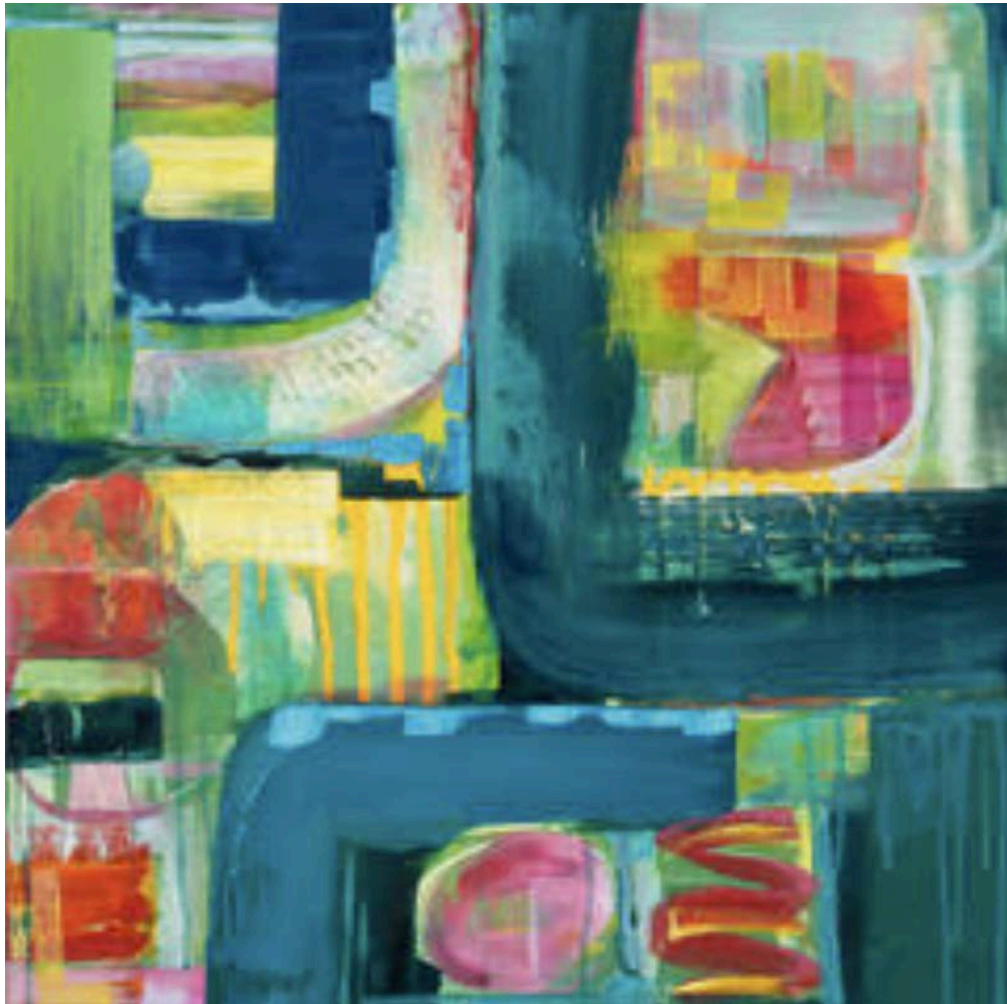


Enhance your home decor with this beautiful ceramic platter, handcrafted by Daphne Borden. Inspired by our coastal setting, the platter features a Beetle Cat Sailboat in the Harbor that beautifully captures the essence of seaside tranquility. Measuring 12 inches long by 9 inches wide, this delightful piece adds a touch of elegance and artistry to any space.

Donated by: Daphne Borden  
Market Value of Donation: \$550

A6

## "Channel" by Connie Brown



Brilliant colors and bold lines illuminate this limited edition giclee under glass. After focusing on sculpting and painting landscapes for years, Connie Brown became addicted to the puzzle of creating abstract imagery. Her paintings combine a landscape sensibility with color field painting and a finely-tuned sensitivity to paint quality. An amazing piece for any home, it measures 24" x 24" and is ready to hang.

Donated by: Connie Brown  
Market Value of Donation: \$500

A7

# "Fishing Shacks, Westport River" by Jeff Cantin



"Fishing Shacks, Westport River" - "When the Fish Aren't Biting... But You've Got Good Lighting". Jeff Cantin shares "I can often be found fishing in front of these shacks near the mouth of the Westport River. On this evening the sky started turning gray and I knew it was the time to head home. Suddenly the clouds opened and the sun briefly lit up the west facing side of these structures". The dramatic lighting of this image permanently captured that moment on October 1, 2024. Framed sized 19" by 16".

Donated by: Jeff Cantin  
Market Value of Donation: \$300



A8

# "Autumn Glory" by Steve Connors



A beautiful 10"x30" photograph printed on metal of Westport Point and Harbor following a fall thunderstorm. This eye-catching image includes a rainbow that appeared as the storm rolled out. Signed by the photographer.

Donated by: Steve Connors  
Market Value of Donation: \$350

A9

# "Terns in the Queue" by Steve Connors



A beautiful 6"x30" photograph of terns at the water edge. Signed by the photographer.

Donated by: Steve Connors  
Market Value of Donation: \$350

A10

# "Strawberries and Brown Bag" by Liz Coxe



"Strawberries and Brown Bag" 12" by 12" plus frame.  
Liz Coxe is known for her range of work from  
Landscapes to Kitchen Art

Donated by: Liz Coxe  
Market Value of Donation: \$500



A11

# "Keep It Flowing"

By Robert Dec



"Keep it Flowing" is an acrylic on photo transfer piece measuring 9.5" x 7.5". It depicts a stream flowing through a snow covered setting. Robert has experimented with a variety of styles of painting throughout the years ranging from very realistic, to abstracted, to completely abstract with much of his work inspired by classic cars, landscape, the environment and music.

Donated by: Robert Dec  
Market Value of Donation: \$300

A11

# "Rooks vs Knight Endgame" by Iria DeValles-Vieira



Iria DeValles-Vieira is an abstract artist. She experiments with different paints, textures, materials, techniques, and tools to create paintings. She sees her work as a way to get a reaction from herself, the viewer, and ultimately encourage a dialogue. She visualized pieces from a chess board when she had completed "Rook vs Knight Endgame". It is an abstract acrylic painting on 12" x 12" canvas.

Donated by: Iria DeValles-Vieira  
Market Value of Donation: \$100



A12

# "Fishing at Dawn" by Robert Feingold



"Fishing at Dawn" Robert Feingold captures an osprey extracting itself from the water following a sunrise catch near the Adamsville Landing location. The piece measures 16" by 20".

Donated by: Robert Feingold  
Market Value of Donation: \$300



A13

# "The Knubble" by Mary Ellen Flynn



As a Westport resident and longtime boater, the iconic Knubble represents to me both anticipation (leaving the river for an adventure) and relief (returning to safe harbor following a choppy outing on Buzzards Bay)

Donated by: Mary Ellen Flynn  
Market Value of Donation: \$450

A14

## "Tornado Flowers" by Gail Hansen



"Tornado Flowers" by Gail Hansen is monoprint and collage 18"x 20" completed in 2019. Gail Hansen is a Newton and Wellesley based printmaker and book maker. She is a studio member of Shepherd and Maudesleigh Printmaking Studio, the Monotype Guild of New England, Newton and Needham Open Studios and Newton, Needham and Dedham Art Associations.

Donated by: Kristin Martin  
Market Value of Donation: \$350

A15

## "Awakening Osprey" by Barbara Healy



18" x 18" oil painting on a wood panel. Barbara Edlund Healy's paintings reflect the quiet beauty of the New England coast. Oil and acrylic paintings are inspired by the diverse colors of light, atmosphere and nature. She painted the Westport River watershed map on the floor of the WRWA River Center building at Head of Westport.

Donated by: Barbara Healy  
Market Value of Donation: \$300



A16

## "Beneath Shifting Skies" by Michael Hubert



Artist Michael Hubert created his painting depicting the view of shifting skies. It measures 8.5" x 8.5" and is simply framed. Hubert resides in Dartmouth, MA and shows his artwork regionally. His work is an intuitive exploration of nature, light, and edges in between, expressed through abstraction.

Donated by: Michael Hubert  
Market Value of Donation: \$250



A17

## "Osprey & Fish Giclee" by Aurora Goodland

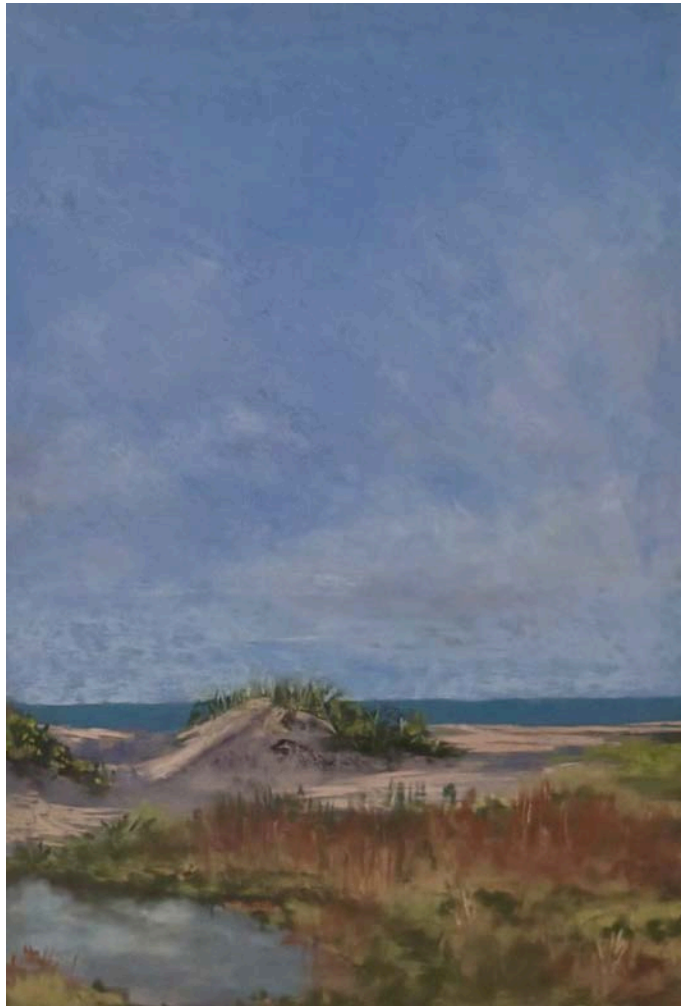


Black & White Giclee print by Aurora Goodland , it is number 4 of only 50 signed. It's a Giclee print of a larger woodcut print. This intricate print depicts the moment an osprey breaks the water surface in hopes of catching a fish swimming beneath.

Donated by: Jill Kelsall  
Market Value of Donation: \$200

A18

## "Pink" by Paula Kochanek



"Pink" depicts the varied colors from the sand to the sky with the ocean in the background. From a young age Paula has always been interested in Art. Her earliest memory of art was when her Mum caught her drawing on the closet's walls. She attended Tri-Country Technical Regional High School. She later attended Vesper George School of Art. Paula started working in stained glass back in the early 80's. A year ago, Paula started working in Pastels. She found working in this medium is so different from glass it became a new love.

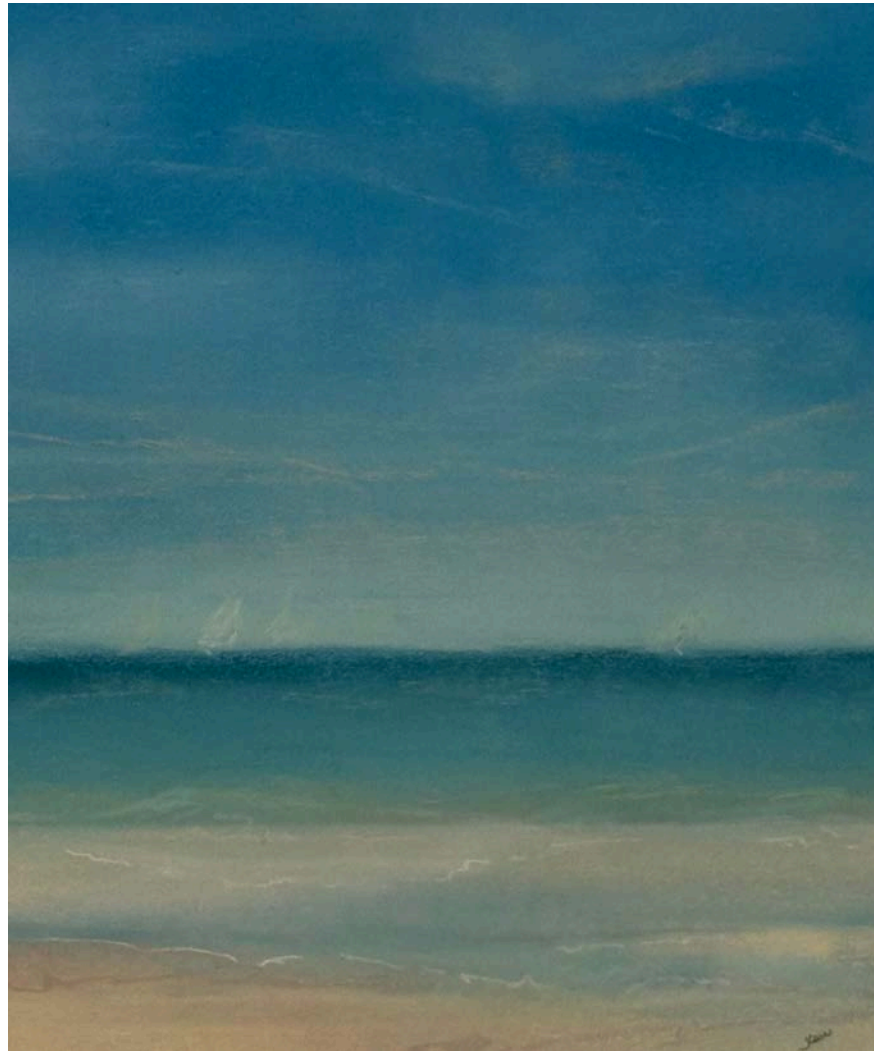
Presently Paula has set up an art studio on her property. She is currently teaching the art of fused glass, stained glass, pastels, marbling on silk scarves, sandblasting and much more. Size 19.5" x 25.5"

Donated by: Paula Kochanek  
Market Value of Donation: \$1200



A19

## "Summer Haze" by Jill Law

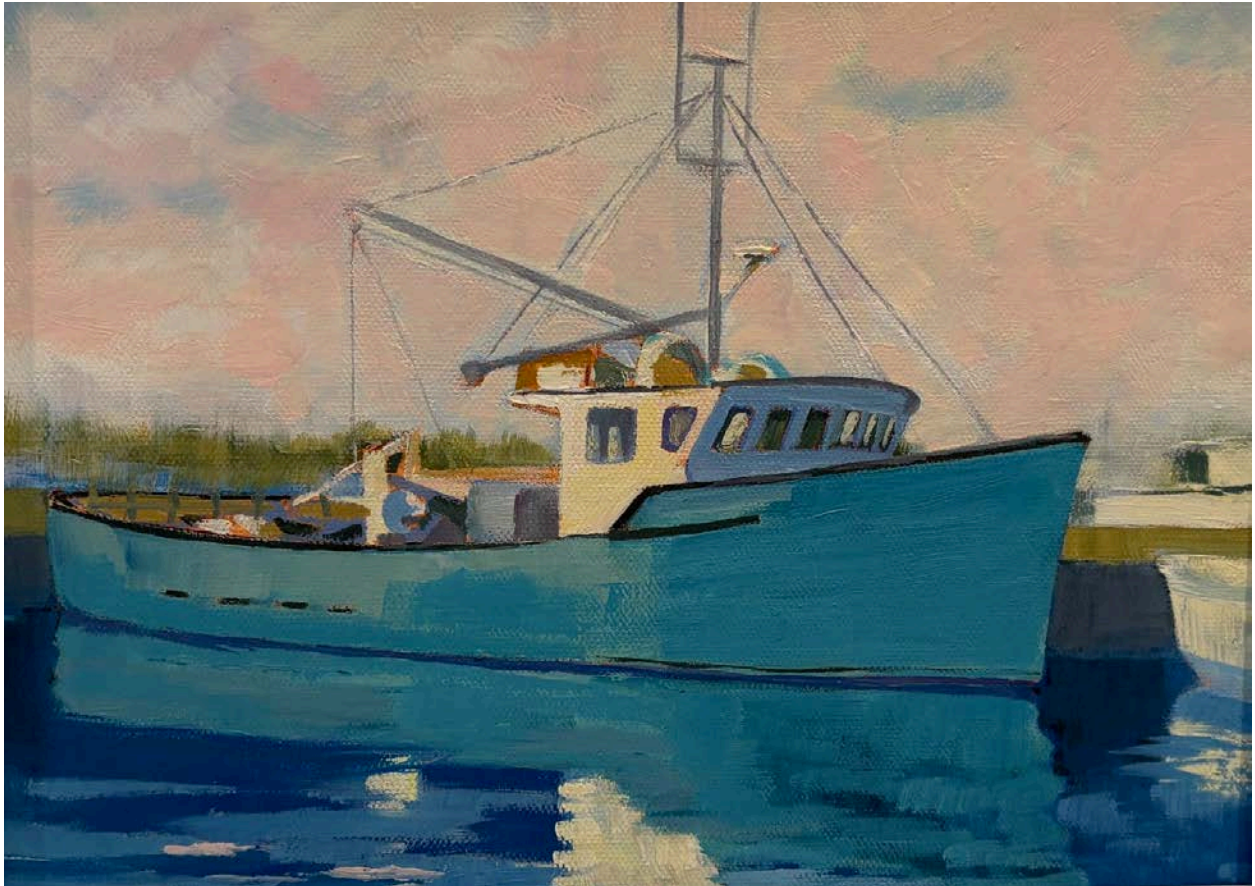


Summer Marsh is a 12"x16" pastel painting presented in a silver plein air frame and museum glass. Jill Law is an award-winning multidisciplinary artist whose work has been exhibited in museums, universities, and galleries across the United States and online globally. Law is the Gallery Director at the Dartmouth Cultural Center, Dartmouth, MA, a founding member and past president. She is an elected Signature Member of the National Association of Women Artists and serves as a Certified Juror for their exhibitions. Law is represented at Norton Gallery in Padanaram, MA.

Donated by: Jill Law  
Market Value of Donation: \$400

A20

## "Westport Morning" by Carolyn Lock



"Westport Morning" by Carolyn Lock is a beautiful 11" x 14" oil painting. Carolyn paints from her studio in Little Compton, RI where she draws inspiration from our coastal environment and its industries. She is currently exhibiting and on the Board of Four Corners Gallery in Tiverton EI and an Open Studio Tour Artist as well as past president of the South Coast Artists, Inc.

Donated by: Carolyn Lock  
Market Value of Donation: \$350



A21

## "Westport Harvest Festival Poster Year 2, 1992" by Betsey Douglas Macdonald



Betsey Douglas Macdonald Harvest Festival Poster #2. This poster is from 1992, the 2nd year of the series. There were specific criteria for the posters which had to represent both farming and fishing and the products associated with these industries. Each design contains hidden images, text and dates. Look for pumpkins, lobsters, quahogs, maps, text and dates embedded in the designs. Each successive year of the festival is represented by the number of pumpkins in the image.

Donated by: Gay Gillespie and Paul Mooney  
Market Value of Donation: \$250



A22

## Intarsia Wood Piping Plovers by Dick Manchester



An Intarsia Wood Art creation of a Pair of Piping Plovers hand-made by Dick Manchester measuring 12" long. Intarsia wood art is a beautiful and intricate form of woodworking that involves creating a mosaic-like picture using pieces of wood with different colors and grains. There is no paint used in this wood technique.

Donated by: Dick Manchester  
Market Value of Donation: \$500

A23

# “The Osprey has landed” by Brian Mullaney



"The Osprey has landed " by Brian Mullaney. 30" x40"

Brian shared: This picture is of one of our neighbors, whose home is on the West Branch of the Westport River, right in our backyard. We live on River Road. I can see this nest and this family as I type these words, which is one of the best things about Westport and why helping the WRWA is so important."

Donated by: Brian Mullaney  
Market Value of Donation: \$1500

A24

## "Nocturnal Lighthouse" by Robin Nunes



"Nocturnal Lighthouse" is a 20" x 10" painting of a lighthouse illuminated by the light of the moon. Robin uses a palette knife to apply oil paint to her canvas, creating gestural marks and layers that vividly capture the timeless pursuit of fishing. Robin's love of nature and plein air painting profoundly influences her art.

Donated by: Robin Nunes  
Market Value of Donation: \$800



A25

## "Blue on Blue" by Galen Snow



"Blue on Blue" is a 12" x18" giclee on canvas. As the creative process takes over, I feel a stronger sense of purpose; a renewed focus at the center of my being where making art is my breath as it nurtures my listening heart, my core of strength. Staying open to the elements and putting them down the way I'd like is in itself a challenge!! When I gratefully let in the beauty of each day - watching the hawks soar, noticing the ripples of light on a wave or a flowers' grace nodding in the wind, I find peace there, in the moment, and the inner energy that keeps moving me forward in my craft.

Donated by: Galen Snow  
Market Value of Donation: \$350

A26

## "Crocus and Birch Melody" by Donna St Amant



Photograph printed on metal, 13" x 19". Donna uses a high-resolution flatbed scanner as a 'studio camera' and the fine detail it captures never ceases to amaze viewers. She records the close up beauty of flowers, birch bark, and elements of nature that cross her path. She builds depth and layers from foreground to background on the glass surface.

Donated by: Donna St Amant  
Market Value of Donation: \$500

A27

# "After the Rain" by Heather Stivison



Heather Stivison created this 11 x14 acrylic, plein air painting, framed and ready to hang. Painted alla prima style (in one sitting), it captures the subtle moments just after a grey rain ends, when our coastal winds begin to blow the clouds out to sea. Heather Stivison is an award-winning visual artist whose work has been exhibited in museums, universities, and galleries across the United States and in juried shows in Europe and Asia.

Donated by: Heather Stivison  
Market Value of Donation: \$500



A28

# “Blowing Sails” by Donald Stoltenberg



"Blowing Sails" a collagraph etching #76/250. The etching is mounted on a 14" by 14" mat Stoltenberg's work has been included in major exhibitions of contemporary art throughout the United States, most notably at the New York Metropolitan Museum of Art, the Art Institute of Chicago, the Museum of Fine Arts in Boston, the Boston Institute of Contemporary Art, the Boston Athenaeum, the Corcoran Gallery of Art in Washington, D.C., the DeCordova Museum in Lincoln, Massachusetts, the Copley Society of Boston, the Fogg Museum at Harvard University, and the Worcester Museum.

Donated by: Michele Demarest and John Patterson, Jr  
Market Value of Donation: \$500

A29

# “Warm Sails II” by Donald Stoltenberg



"Warm Sails II " a collagraph etching. The etching is mounted on a 9" by 9" mat Stoltenberg's work has been included in major exhibitions of contemporary art throughout the United States, most notably at the New York Metropolitan Museum of Art, the Art Institute of Chicago, the Museum of Fine Arts in Boston, the Boston Institute of Contemporary Art, the Boston Athenaeum, the Corcoran Gallery of Art in Washington, D.C., the DeCordova Museum in Lincoln, Massachusetts, the Copley Society of Boston, the Fogg Museum at Harvard University, and the Worcester Museum.

Donated by: Michele Demarest and John Patterson, Jr  
Market Value of Donation: \$300

A30

## "Fruiting Body" by Katherine Conkling Thompson



"Fruiting Body" Centerpiece ceramic sculpture by WRWA member and NY artist Katherine Thompson. Shapes from nature combine to create a beautiful lit sculpture for the table.

Donated by: Tom and Kate Schmitt  
Market Value of Donation: \$500



A31

## Bubinga Wood Dowitchers by Harry Raymond Tyler

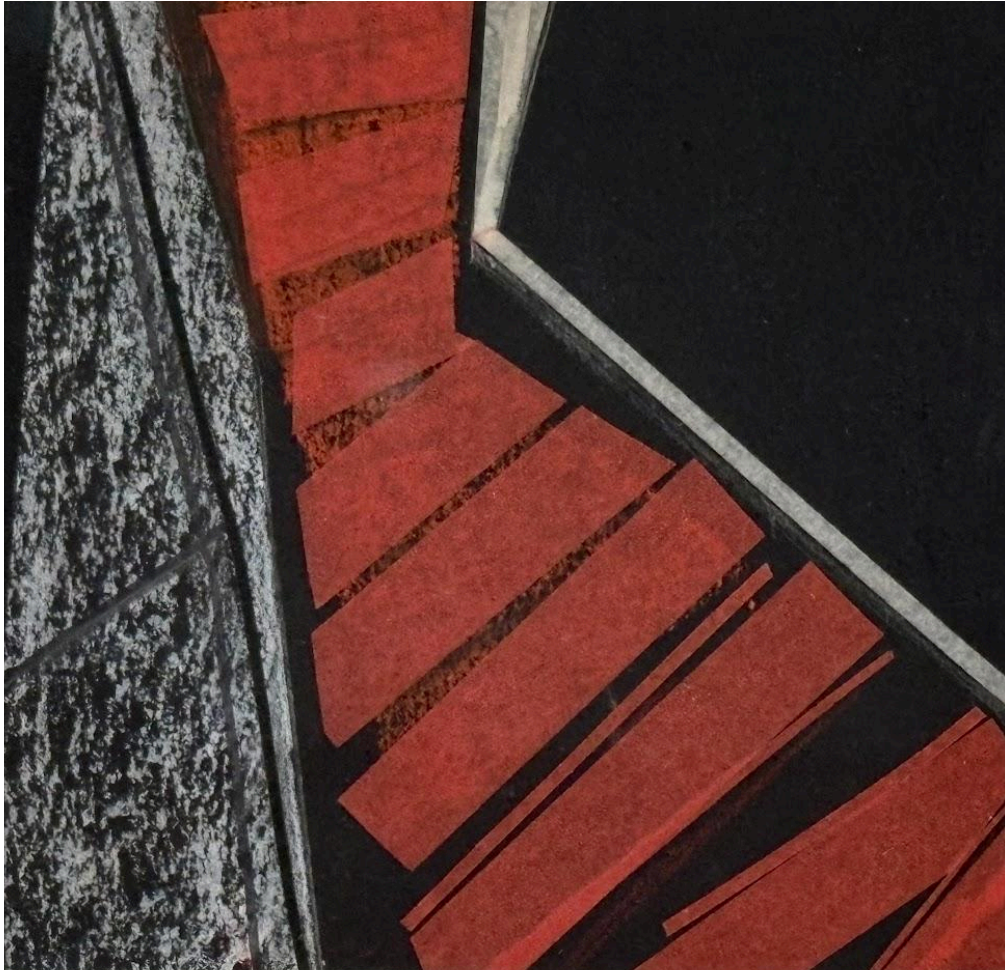


A Pair of Dowitchers Feeding. Signed one-piece carving in rare Bubinga wood signed by Harry Raymond Tyler, a 20th century NE bird carver, 1980.

Donated by: Tom and Kate Schmitt  
Market Value of Donation: \$500

A32

## "escalera red NY" by Jill Weber



This eye-catching piece by Jill Weber depicts The "escalera red", Red Stairs in Times Square, New York City, which is a popular public space and entertainment venue. This 6" by 6" is matted in a 13" by 13" frame.

Donated by: Kristin Martin  
Market Value of Donation: \$350

A33

## "She Loves Me, She Loves Me Not?" by Carol Way Wood



A joyful watercolor and graphite pencil painting of a bunny picking petals off a daisy by Carol Way Wood. Selling her first painting at age 14, Carol has been a freelance artist and illustrator ever since. Growing up in a New England family of artists and nature lovers, her inherited talent and love for nature shine through in her whimsical watercolors. She is a member of 6 1/2 Bridge St. Gallery in Padanaram.

Donated by: Carol Way Wood  
Market Value of Donation: \$150



A34

## "Bliss" by Barbara Humphrey



"Bliss" by Barbara Humphrey is a custom framed 12" x 9" oil painting.

This painting is a capture of the amazing colors they see on walks along the shores of the Abaco Sea in the Bahamas. In this oil piece, Barbara painted the brilliant blues and green colors in the breaking waves on the shoreline of Great Guana Cay, Sea of Abaco , Bahamas.

Donated by: Barbara Humphrey  
Market Value of Donation: \$450



A35

## "Harbor Sandpipers" by Varick Niles



11"x14" Acrylic painting, framed painting. Varick paints local landscapes capturing the ever changing harmonies of light according to the season. Varick paints in Massachusetts and Florida and her favorite subjects are garden flowers, fruits and vegetables, along with scenery of the nearby coastal river marshes, fields and open spaces.

Donated by: Varick Niles  
Market Value of Donation: \$500

A36

## "Sunrise over Westport River in 1862" by John Stobart



A beautifully framed numbered print of John Stobart's iconic "Sunset Over Westport River in 1862". The New Bedford whaling brig "Kate Corey" dries her sails after returning to port at Westport Point, all colored in rosy hues by a beautiful setting sun.

Donated by: Ursula Dodge  
Market Value of Donation: \$400



A37

## "I'm right here, Mom!" by Greg Stone



"I'm right here, Mom!" Piping Plover chick and mom at Allens Pond in late June of 2015. These two were in a protected area for breeding pairs, and this mom had four chicks, all of whom could somehow fit under her at one time for protection. As they scurry among fist-sized rocks on the beach, they are hard to see- the trick is to look for a rock that moves.

Donated by: Greg Stone  
Market Value of Donation: \$200

A38

## “The Landing” by Nancy Whitin



"The Landing" by Nancy Whitin is a custom framed pastel in a gold frame with museum glass. Nancy Whitin has been juried in as a member of the prestigious Pastel Society of America in NYC and is a Member of Excellence with the Southeastern Pastel Society. An avid sailor and rower, she is compelled to paint our beautiful local marshes and beaches.

Donated by: Nancy Whitin  
Market Value of Donation: \$700



G1

# One Hour Family Photo Session With EarthStart Photography



Enjoy a one hour photography session with professional photographer WRWA's Education Director, Kim Botelho.

Book a session with your family, couples, children, pets and/or friend groups. Receive an online gallery with full usage rights of the images. Willing to travel up to 1.5 hours round trip.

Donated by: Kim Botelho  
Market Value of Donation: \$200



G2

# Frigidaire Air Fryer



Enjoy five ways to cook in one convenient counter top appliance. Deliver all of the flavor and none of the guilt with Air Fry. Achieve bakery results at home. Fryer comes with a copy of bluejeanCHEF Air Fry GENIUS by Meredith Laurence. Easy and Delicious Meals!

Donated by: Stan & Paul's - Lynne Schaefer  
Market Value of Donation: \$200

G3

## "Gathering Basket" by Leanne Wilkie

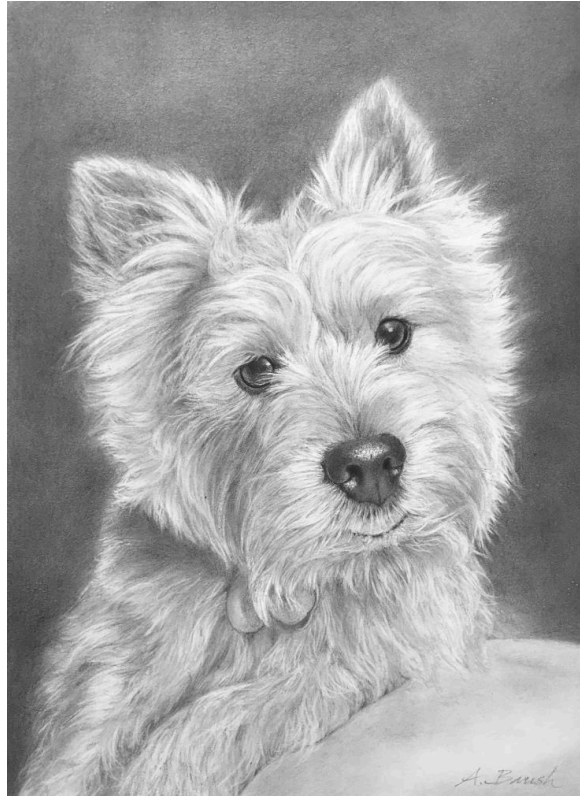


This beautiful hand-woven gathering basket measures 14" x 20" x 6", with the handle it stands 12.5" high. It's the perfect basket for many occasions.

Donated by: Leanne Wilkie  
Market Value of Donation: \$150

G4

## Commissioned Pet Portrait by Alison Brush



Commissioned portrait of your favorite dog or cat by Alison Brush. Alison works from your photograph, and captures the perfect image and unique character of your pet with her exquisite drawing. Portrait is done on Fine Art Graphite drawing paper. Measures 8"x 10". Unframed.

Donated by: Gigi Priebe  
Market Value of Donation: \$600



G5

# Mirto Multicolor Dress

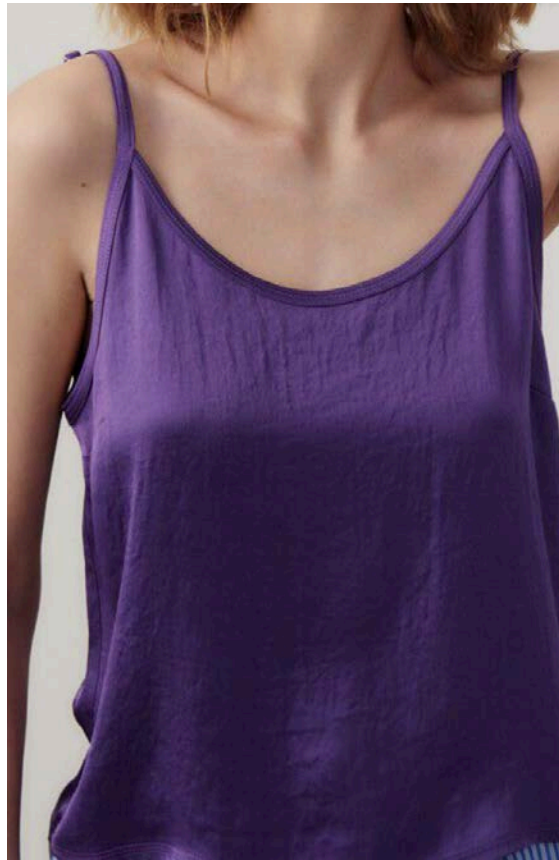


Get ready to turn heads in the Mirto Dress! Made in Spain.  
Design multi colored floral with windows/window boxes  
Size M/42.

Donated by: Jeffrey Westport Owner, Jeffrey Cayer  
Market Value of Donation: \$550

G6

# Mirto Floral Skirt and American Vintage Neon Purple Top



A Made in Spain Mirto Floral Skirt and American Vintage  
Neon Purple top. Size S/38

Donated by: Jeffrey Westport Owner, Jeffrey Cayer  
Market Value of Donation: \$500

G7

# Terre Rouge School of Fish Shirt and Chiara Short (Harbour Grey)



Enjoy this great pairing of a Terre Rouge School of Fish  
Shirt and Harbour Grey Chiara Shorts ! size L

Donated by: Jeffrey Westport Owner, Jeffrey Cayer

Market Value of Donation: \$250



G8

# Davoll's Gift Bag with Cafe Gift Certificate



Take a ride over to Russells Mills Village and visit Davoll's General Store, the oldest operating general store in the US, established in 1793. Tote bag contains an OGO Glass coffee press, a Davoll's mug, coffee and \$25 gift certificate and more. Enjoy a meal and bar beverage or shop in the iconic book store!

Donated by: Maryanne Buckley  
Please use the gift certificate within a year  
Market Value of Donation: \$200

G9

## Children's Dress - Poppy Fields



The dress is a classic smocked yoke dress in Liberty of London Tana Lawn fabric - Poppy Fields. It is a size 5. Handmade by dressmaker, Joanne Chevière, who designs children's clothing for ages infant to age 6 specializing in English style smocking, heirloom and embroidery. She is a long standing member of SAGA (Smocking Arts Guild of America) and has studied with the best known names in the smocking and heirloom world.

Donated by: Joanne Cheviere  
Market Value of Donation: \$250

G10

# Chelsea Time and Tide Clock



This Chelsea Tide and Time Clock is a beautiful statement piece that combines both regular and tide time on a single dial. The outer band is Standard time. The inner portion is color coded indicating phases of the tide. The two red triangles at 3 and 9 o'clock positions represent mid-tides.

Donated by: Michele Demarest and John Patterson, Jr  
Market Value of Donation: \$800



G11

# Three Hours of Handyman Services



Need help with household projects? This item provides three hours of handyman or property management services from Philip Cloutier of Coastal Home Improvement, a licensed and insured contractor in MA and RI. Services include general maintenance, carpentry, renovation insights, and indoor/outdoor enhancements for historic to modern properties. Proud WRWA member and Westport resident, dedicated to treating your home as our own.

Donated by: Philip Cloutier  
To be used within a year from 8/09/25  
Market Value of Donation: \$300

G12

# Yoga Class Package



Discover the transformative benefits of yoga with a gift certificate for 10 classes at Power and Grace Yoga in New Bedford, MA. Co-Owner and Creator Andrea is a highly skilled Sva Ha Yoga Teacher Trainer, Reiki 2 attuned, and an Energy For Life Flow Coach in training. This 10-class package is a perfect chance to explore movement and relaxation under the expert guidance of an experienced instructor.

Donated by: Andrea Deveau- Cabral  
Market Value of Donation: \$200

G13

# Home Technology Checkup



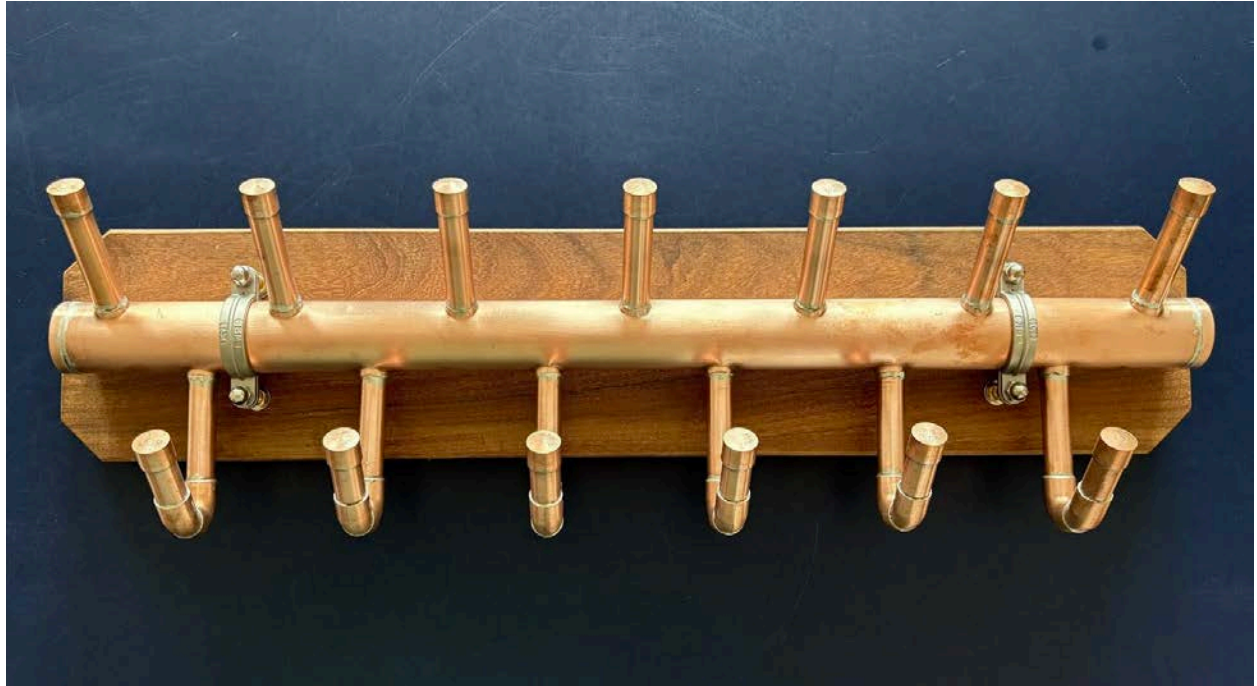
Smart devices not working or set up the way you'd like? Did you buy a smart camera or other equipment but never figured out how to get it working? Is your wifi network as secure and as fast as you'd like? Printer dead? Would you like Alexa to wake you to NPR morning edition? This item will include 1-2 hours of diagnosis and advice on any smart/computing/wifi equipment you'd like to set up or work better than it does today.

Donated by: Ken Short  
Market Value of Donation: \$200



G14

# Handmade Copper Coat Rack



Copper coat rack with 13 hooks mounted on a wood back  
and ready for your foyer or mudroom!

Functional yet beautiful. Measures 26" long.  
Handmade by WRWA member Matt Kelsall.

Donated by: Jill & Matt Kelsall  
Market Value of Donation: \$300

G15

# Landscape consultation with Blisscapes Design



One hour landscape consultation for your home or property. Blisscapes Landscape Design & Nursery, located in South Dartmouth, MA, is an award-winning landscape design firm that designs, installs and consults for residential and commercial clients. You'll enjoy a landscape that is environmentally sound and offers practical theme design. The diversity of plants and materials available from Blisscapes will allow for a broad pallet of color and texture that will be creatively applied to your outdoor space.

Donated by: Bill Gil  
Certificate must be used by 4/1/2026  
Market Value of Donation: \$200

G16

# Commissioned Pet Portrait by Pamela Lowell



Commissioned portrait of your favorite pet by local artist Pamela Lowell. Pamela is a juried artist and author and illustrator of "*My Summer with the Ospreys*." The portrait will be done from a photograph of your pet and will be a 12 x14 unframed watercolor painting.

Donated by: Pamela Lowell  
Market Value of Donation: \$200



G17

# Full Body Massage with Sherry Spencer Brown



Enjoy a relaxing massage or Reiki session with licensed massage expert and PT, Sherry Spencer Brown in her lovely studio on Main Road in Westport. Sherry is an experienced physical therapist in private practice. She has advanced training in lymphedema prevention/management, oncology rehabilitation, massage and manual therapies. Her mission is to raise awareness of lymphatic system health and provide individualized care in a healing environment.

One Hour Massage.

Donated by: Sherry Brown

Mutually agreed date, to be used before Aug 2026

Market Value of Donation: \$150

G18

# Yamaha 2.5 HP Tiller Outboard Motor F2.5 2025



Yamaha's 72 cf 2.5 HP portable outboard is the smallest motor on the roster, but it still packs a punch. Completely redesigned, it's even more portable, easier to store and clean burning. This brand-new motor donated by Drew's Marine Service at Westport Marine Center can be yours today!

Donated by: Drew's Marine Service  
Market Value of Donation: \$1,200

G19

# Westport River Charcuterie Board and Artisan Cheese Selection from Sweet and Salty Farm



This customized Westport River Charcuterie Board is perfect for presenting your personal selection of cheeses from Sweet and Salty Farm. The board was customized by Sam Wilson with James River Woodcraft and shows the East and West Branches of the Westport River. Sweet and Salty farm is a small dairy in Little Compton, Rhode Island. They milk a small herd of grass-fed Jersey cows and process all of their own milk into yogurt and cheese at their on-farm creamery. The lucky winners will receive a basket of cheeses being currently produced, ranging from soft and spreadable, to delicious blue and perhaps seaweed or pepper encrusted!

Donated by: Laura Haverland and Andrew Morley and  
Sam Wilson, James River Woodcraft  
Market Value of Donation: \$200



G20

# Cypress Table Hand-built by Phil Vance



Hand-built outdoor Cypress deck table with laminated arch supports, exterior waterproof glue and no metal fasteners. Watco Danish exterior natural oil finish

Donated by: Phil Vance  
Market Value of Donation: \$800

G21

## Tahitian Pearl Bangle by Harmony Winters



Harmony Winters bangle bracelet is locally made in Adamsville shop. Glowing silver grey Tahitian pearl spins freely around a 14k gold filled metal bangle bracelet, hammered and polished to a shine. Each Tahitian pearl is unique is hand picked by Harmony for its color and luster.

Donated by: Harmony Winters  
Market Value of Donation: \$225



G22

## Washable Pendleton Eco-Wise Wool Blanket



Wool just became washable. The Pendleton Eco-Wise Wool Blanket is made from 100% pure, naturally renewable wool, dyed with neutral colors and finished with whipstitched edges. The King sized blanket measures 108" x 96".

Donated by: Country Woolens  
Market Value of Donation: \$300



G23

# Holiday Wreath from The Farm



Decorate for the holiday season with a beautiful wreath from The Farm in Tiverton Four Corners. This gift certificate is valid for one of The Farm's large, original, handmade Holiday Wreaths. Each wreath is a work of art and beautifully designed by Peggy Siebrandt with fresh and unusual greens.

Donated by: Peggy Siebrandt - The Farm  
Market Value of Donation: \$150

G24

# Gnome Surf Therapy Session



For kids ages 4+ through adulthood. A whimsical unique approach to surfing. One on One Lesson for 45min to 1 hour. We focus on aspects of self confidence and positivity. We work on a variety of things from core strength and coordination to self awareness and decision making in a very FUN way. Our goal is to have our athletes believe wholeheartedly that they are capable of achieving their every dream and leave our lesson feeling on top of the world. This package includes a Gnome Surf Therapy t-shirt and tote bag.

Donated by: Gnome Surf Therapy  
Market Value of Donation: \$100

G25

## Frank Clegg Signature Travel Duffle



Handmade Leather Bag from the Frank Clegg Studio in Fall River. Their fine leather goods are expertly crafted using carbon-neutral, vegetable-tanned leather. Leather

Our iconic Signature Travel Duffle has always been an essential companion for short business trips and weekend getaways. Pairing form and function, this straightforward design has a generously spacious interior allowing you to bring everything you need!

Donated by: Ian Clegg  
Market Value of Donation: \$1450



G26

## Entertaining Set from Manchester Interiors



An artfully curated entertaining set including handmade beeswax candles, woven tray, chambray linen napkins and decorative matchbox. From Manchester Interiors, a home furnishings shop & interior design studio located at the intersection of Main Rd. & Adamsville.

Donated by: Pam Manchester  
Please use the certificate by July 2025  
Market Value of Donation: \$300

G27

# Hydrangeas from Sylvan Nursery



Four hydrangea plants hand picked by Sylvan Nursery experts. A perfect addition to your landscaping plans. Hydrangeas are popular ornamental shrubs known for their large, showy flower clusters and long blooming season. They are a beloved choice for gardens across America due to their vibrant colors and versatility in landscaping

Donated by: Sylvan Nurseries, Jim McBratney  
Market Value of Donation: \$200



G28

# Lapis Drop Earring on 14k yellow gold



Bold and beautiful, this simple earring is perfect as your daily driver. Lapis has a strong connection with the universe and divine truth allowing you follow your intuition. 14k yellow gold drop earring on medium chain with smooth heart shaped lapis. Length 1.5"

Donated by: Tiffany Peay  
Market Value of Donation: \$425



G29

## Saltmarsh Pottery Bowl



This 15" Rounded Blue Scallop Plate is one of a kind and will grace any table. A circle of multi-colored blue Scallops adorn the outer ring, distinguishing this piece as uniquely South Coast New England.

Donated by: Saltmarsh Pottery and Betsy Powell  
Market Value of Donation: \$175

G30

## Men's Crocodile Belt and Magnetic Money Clip by Zambezi Grace



Raised sustainably in South Africa, Zambezi-Grace distributes high-end elegant items custom made from crocodile. As a leading crocodile leather provider to the largest luxury groups and brands in the world, they insist on the highest standards of excellence while promoting sustainable practices that minimize environmental impact. This belt is hand dyed tangerine may be exchanged or altered to accommodate alternative sizes.

Donated by: Bruce Earle  
Market Value of Donation: \$575

G31

## Women's Leather Cuff by Zambezi Grace



Raised sustainably in South Africa, Zambezi-Grace distributes high-end elegant items custom made from crocodile. As a leading crocodile leather provider to the largest luxury groups and brands in the world, they insist on the highest standards of excellence while promoting sustainable practices that minimize environmental impact. This cuff is hand dyed tangerine.

Donated by: Bruce Earle  
Market Value of Donation: \$200



G32

## SHERIDAN FRENCH rhodes dress in worth avenue palm



SHERIDAN FRENCH rhodes dress in worth avenue palm. A short and breezy dress for those warmer days. Hand embellished neckline. Side pockets. A relaxed mini dress in carefully crafted prints. Cotton Lycra - with the slightest amount of gentle stretch.

Donated by: Jeffrey Westport Owner, Jeffrey Cayer  
Market Value of Donation: \$325

G33

## Antique Drake Bluebill (Greater Scaup) Decoy



This antique hunting Drake Bluebill (Greater Scaup) Decoy made from solid pine from Chesapeake Bay. Birdshot evident on body and head. Maker Bob McGraw (1879-1958) Havre de Grace, Md

Donated by: Peter Lisle  
Market Value of Donation: \$200

G34

## Drake Bufflehead Decoy



Drake Bufflehead hunting decoy. Hand carved and painted. Made in the Chesapeake Bay. Prime Condition.

Donated by: Peter Lisle  
Market Value of Donation: \$200



G35

## Drake Greenwing Teal Decorative Decoy



This carefully painted decorative decoy is an eye-catching piece. The little Green-winged Teal is the smallest dabbling duck in North America.

Donated by: Peter Lisle  
Market Value of Donation: \$100

G36

# Drake Goldeneye Decorative Saltwater Decoy



This Drake Goldeneye Decorative Saltwater decoy  
is life size and made by Michael Trudell

Donated by: Peter Lisle  
Market Value of Donation: \$150

G37

## 16 Bottle Wine Cooler and a case of wine



Your favorite wines will be properly stored in this free standing narrow wine cooler. It's sleek design fits in well in many entertaining spaces. Unit holds up to 16 bottles of wine.

A free case of favorite wines has been donated by members of the WRWA Board to the winning bidder!

Donated by: WRWA Board Members  
Market Value of Donation: \$900



G38

## It's Wine Time!



A few bottles of wine, a wine cooling tote, a set of lifefactory silicone sleeved wine glasses, wine charms and more!

Donated by: A Friend of WRWA  
Market Value of Donation: \$100

G39

## "South Coast Sea Life" Decoupage Lamp



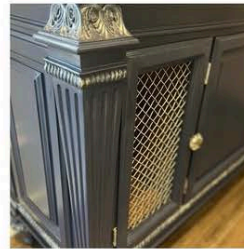
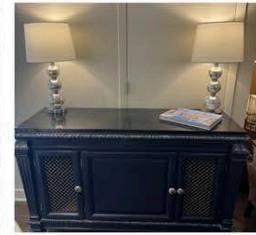
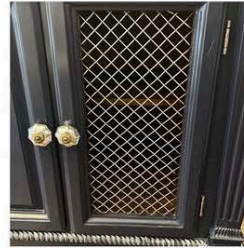
Maggie Swift has created this stunning decoupage lamp, perfect for enhancing any room in your home. The base has been expertly crafted, the lamp showcases a beautiful assortment of South Coast sea life decoupage on a painted terracotta background.

Donated by: Maggie Swift  
Market Value of Donation: \$600

G40

# Jake and Lulu Furniture Restoration and Home Refresh

**Sample before and after:**



This certificate is a \$500 value of a furniture refresh, a piece that you own or we can work together to find a piece to be custom for your home (a dresser, set of 4 chairs, 2 side tables, console) if your item is bigger then the \$500 will go towards your project .

Project will be done July 2026.

Donated by: Liz Burrello Opie  
Market Value of Donation: \$500



E1

# Beekeeping Experience

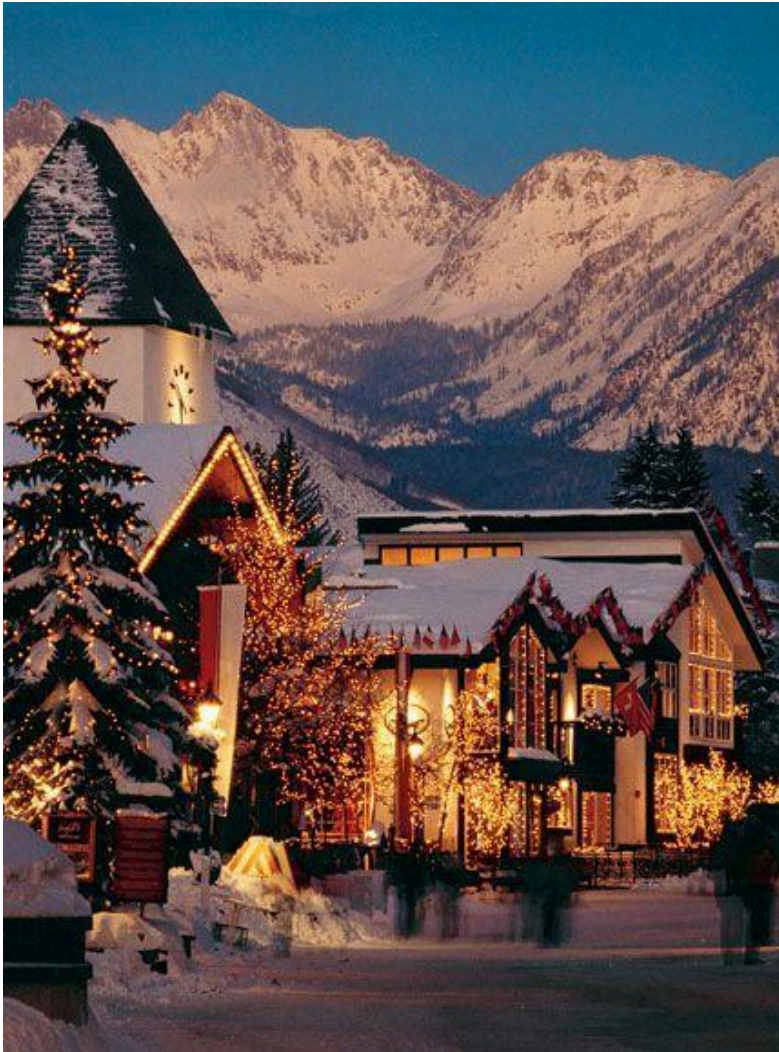


One hour beehive inspection & lesson, includes 1 lb local wildflower honey. Maximum three guests. Not suitable for young children. To be redeemed June-August 2026.

Donated by: Katharine Rosenfeld  
June-August 2026  
Market Value of Donation: \$150

E2

## Winter Wonderland in Vail, Colorado



**2 Weeks in Vail!!!!** Enjoy some of the world's best skiing in Vail, Colorado. Stay in a well-appointed 2-story condo with 3 bedrooms, 3 1/2 baths, fully equipped kitchen and lovely fireplace. The condo is 10 minutes from Vail Mountain or Beaver Creek, and near Breckenridge, Copper and Keystone. Aspen and Snowmass are 1 1/2 hours away. Cat skiing is also an option. Just outside the condo there is snowshoeing, cross country skiing and walking. Enjoy a day off from the slopes and visit the old mining town of Minturn or the 10th Mountain

Division's original location just outside Leadville where the infamous Molly Brown was from. Enjoy a variety of programs at the Villar Arts Center in Beaver Creek. Nearby Avon has a superb recreation center with pools, hot tub, gym, yoga classes and much more. At the end of the day, kick back and relax by the fire with your favorite friends.

Donated by: Cathy and Ted Pomeroy and Dorothy (Dottie) Harris

**February 25 thru March 11, 2026**

Market Value of Donation: \$12,000



E3

## Cruise the Sakonnet aboard Serena



Captain Peter & First Mate Barb will host up to six guests for a lively cruise down the Sakonnet River, or north and west towards Bristol Harbor. The destination will depend upon the winds, tides and the Captain's choice. You will greet Serena at her deep water dock in the Sakonnet River Basin. Once aboard Serena you'll find she is a comfortable and roomy 43' Hinckley sloop design, and will smoothly glide you along our beautiful coastline. Lunch or Apps, water, cruising cocktails, spritzers and of course wine and beers will all be provided by your hosts.

Donated by: Peter & Barbara Humphrey  
Sail date to be mutually agreed upon by September 2026  
Market Value of Donation: \$1,200



E4

# Cruise to Cuttyhunk, Including Lunch and Drinks



Join WRWA President, Mike Sullivan and his wife, Martha, as you and up to seven guests cruise through scenic Buzzards Bay on the Sullivan's 43 foot Entropy to the magical island of Cuttyhunk. Look for seals on the way! Lunch and drinks will be provided on the docks in Cuttyhunk Harbor. From there, you will hike up to the top of Tower Road for a panoramic view of Buzzards Bay & Rhode Island Sound. Conditions permitting, a possible side trip to Penikese Island may be possible as you cruise back to Westport Harbor.

Donated by: R. Michael Sullivan  
Weather permitting  
Market Value of Donation: \$1,500

E5

# Afternoon Coastal Fishing Trip



Join Sean Mullaney for an afternoon coastal fishing adventure aboard a 42 ft. center console Scout 425 LXF. Welcoming up to five guests, this trip includes all necessary fishing supplies, as well as snacks and drinks to keep you refreshed.

Donated by: Sean Mullaney

Mutually agreeable date Summer or Fall of 2025 or 2026

Market Value of Donation: \$1,000

E6

## Half-Day Fishing Trip with Captain Sam Barnard



Two anglers will join Captain Sam Barnard for a half-day fishing trip in and around the Westport River, Little Compton, and the Elizabeth Islands. With 18 years of experience guiding and fishing these waters, Sam specializes exclusively in fly and light tackle fishing. Sam feels strongly about the declining numbers of Striped Bass and he practices catch and release with barbless hooks. He specializes in fly fishing which is least harmful to the fish. All equipment and beverages will be supplied.

Donated by: Sam Barnard  
Catch and Release. Available at a mutually agreed to time and date.  
Market Value of Donation: \$800



E7

# Golf for Three at Wannamoisett Country Club



Join member Tom Slaight for 18 holes on a Donald Ross championship course. Wannamoisett Country Club is one of the premiere golf courses in the U.S. located in Rumford, Rhode Island, it is impeccably conditioned with 18 undulating greens and carefully placed bunkers. Golfers of all ages and abilities find Wannamoisett Golf Club courses challenging and enjoyable. Each year, Wannamoisett hosts the prestigious Northeast Amateur where aspiring pros complete their amateur careers.

Donated by: Tom Slaight  
Must Schedule and use by November 2025  
Market Value of Donation: \$450

E8

## Handel and Haydn Society Concert Handel's Messiah - Two Tickets



Tickets to Handel and Haydn Society Concert of Handel's Messiah Sunday, November 30th, Symphony Hall, 3pm. For the 172nd consecutive year, H+H presents Handel's iconic Messiah, the greatest story ever told in song. This majestic music will rekindle joy and hope at Symphony Hall with the incomparable H+H Orchestra and Chorus under the "expert direction" (The Boston Globe) of Artistic Director Jonathan Cohen with renowned soprano Lauren Snouffer who'll bring this soul-stirring story to life with "a lustrous tone" (Cincinnati Business Courier). The performance is on Sunday November 20, 2025 at 3pm in the Symphony Hall.

Donated by: Kristin and Bill Martin  
Market Value of Donation: \$200

E9

# Handel and Haydn Society Concert Baroque Christmas - Two Tickets



Tickets to Handel and Haydn Society Concert of Baroque Christmas Sunday, December 21st, NEC's Jordan Hall 3pm.. Deck the halls with Bach and the brilliance of the Baroque! Celebrate the season with the H+H Orchestra, Chorus, and Resident Conductor Scott Allen Jarrett as they bring you music that overflows with joy and “crackles with spirit” (The Arts Fuse). The performance is on Sunday December 21, 2025 at 3pm in the NEC’s Jordan Hall.

Donated by: Kristin and Bill Martin  
Market Value of Donation: \$200



E10

# Country House Retreat in Tuscany



This breathtaking countryside retreat in Tuscany awaits your arrival for a memorable one-week stay! Located in the heart of Chianti, 35 minutes from the historic center of Florence and 45 minutes from the center of Siena, this beautiful home is surrounded by the sites and delights of Tuscany. Spend a quiet day at home or explore the cradles of art, sample culinary delights, local vineyards and much more. Owner will provide information on customized services at an additional cost, e.g., private tours, home chef, massages, cooking classes, yoga, etc. Four bedrooms have 3 Queen beds, 1 King bed and a twin to sleep 9 people.

Donated by: Giulia Scarpa in Italy

Reservation and stay must be made within 18 months of the winning bid.

Market Value of Donation: \$6,000

E11

# Osprey Tour with Alan Poole



Take a two-hour Westport River trip with three friends and/or family with noted author and Osprey expert Alan Poole. He will show you the Osprey nests on either the East or West Branch, your choice. You will also receive a signed copy of the most recent book: "Osprey, A Natural and Unnatural History". Alan is an Associate of the Cornell Lab of Ornithology and a dynamic naturalist. Children over 4 years of age are welcome.

Donated by: Alan Poole  
Use during Summer 2025  
Market Value of Donation: \$450



E12

# Red Sox vs. Yankees - Two Tickets September 12th



Enjoy the excitement of the Red Sox versus Yankees game on Red Sox/Yankees game on Friday, September 12 at 7:10pm. The seats are in the Grandstand, section 29, row 1, seats 17 & 18. Immerse yourself in the electric atmosphere of Fenway Park from these fantastic Grandstand Seats close to the action of the game.

Donated by: Kate and Carroll Williamson  
Market Value of Donation: \$350



E13

# Experience Providence



Enjoy a day in Providence with lunch or dinner at the Waterfront Grill or Hemenway's famous seafood restaurant and a visit to the Rhode Island School of Design Museum. Basket includes a \$100 Gift Card for the Newport Restaurant Group and a One Year Membership for you and a guest at the RISD Museum. The Gift Card may also be used at other restaurants in the Newport Restaurant Group. ([newportrestaurantgroup.com](http://newportrestaurantgroup.com))

Donated by: RISD and Newport Restaurant Group  
Market Value of Donation: \$200

E14

# Gourmet Dinner on the River hosted by Phil Weinstein



A Culinary Dream. Enjoy a special evening with friends from the treetops off River Road, overlooking the beautiful West Branch. “Chef Phil” will prepare a gourmet dinner for 6, complete from hors d’oeuvres to dessert, just for you. Phil has studied with Nancy Barr, assistant to Julia Child and has also taken numerous cooking classes in foreign countries. He is happy to design a special menu for you and your guests. Wine and beer are included with this spectacular evening!

Donated by: Phil Weinstein

Limited to 6 People & must be used by Aug 2026 - Certificate Required  
Market Value of Donation: \$800



E15

# Cheese and Wine Mystery Pairing on the banks of the Westport River



An opportunity to explore cheeses and wines you will likely not have encountered before - with a light-hearted and fun guessing game thrown in. You and your five guests will join Ken and Korina Ramsland Short at their home for an experience your tastebuds will not forget! Date and time to be arranged with the lucky winner!

Donated by: Ken Short  
Market Value of Donation: \$400



E16

## One night at the Irving House Inn in Cambridge, Tickets to ART, and gift card to Henrietta's Table



A one night stay for two in the heart of Cambridge with a \$150 gift certificate to the American Repertory Theater and a \$150 gift certificate to Henrietta's Table. Spend an evening in Harvard Square to take in the sights, enjoy the theater, and then return to this comfortable guesthouse on a quiet street, just a ten minute walk from the square. Three blocks away from the Harvard Art Museums, which are free and very impressive.

Parking and breakfast also included.

Donated by: Brianna Pearson and Carol Moriarty  
Unavailable Harvard Graduation weekend

Market Value of Donation: \$550

E17

# Zulu Nyala Photo Safari for Two



- 6 days and 6 nights accommodation (Classic Room or Tents) for two people at the Zulu Nyala Heritage Safari Lodge (depending on availability), situated in the heart of South Africa's Zululand conservation region – one of the richest conservation regions in Africa.
- Full board which includes three delicious meals per day
- Two game viewing activities per day guided by professional game rangers in open game viewing vehicles on Zulu Nyala Game Reserve
- Access to our incredible facilities such as our swimming pools, bars, gym, spa, succulent gardens, resident wildlife, tennis court, library/tv areas, restaurant areas and more!

The Photo Safari package is valid for 2 years from Date of Purchase and is Non-Refundable.

Donated by: Zulu Nyala  
Market Value of Donation: \$8000



E18

## Backyard Concert with Sanford Flat



Three hours of live music for your backyard or house party performed by Sanford Flat, a trio consisting of Mary Beth Soares, Jim Piatt and Mark Luttmann. The group (vocals, acoustic guitar/banjo, piano) recently played at the Westport Food Pantry Summer Social. They also can be found regularly on stage at Buzzards Bay

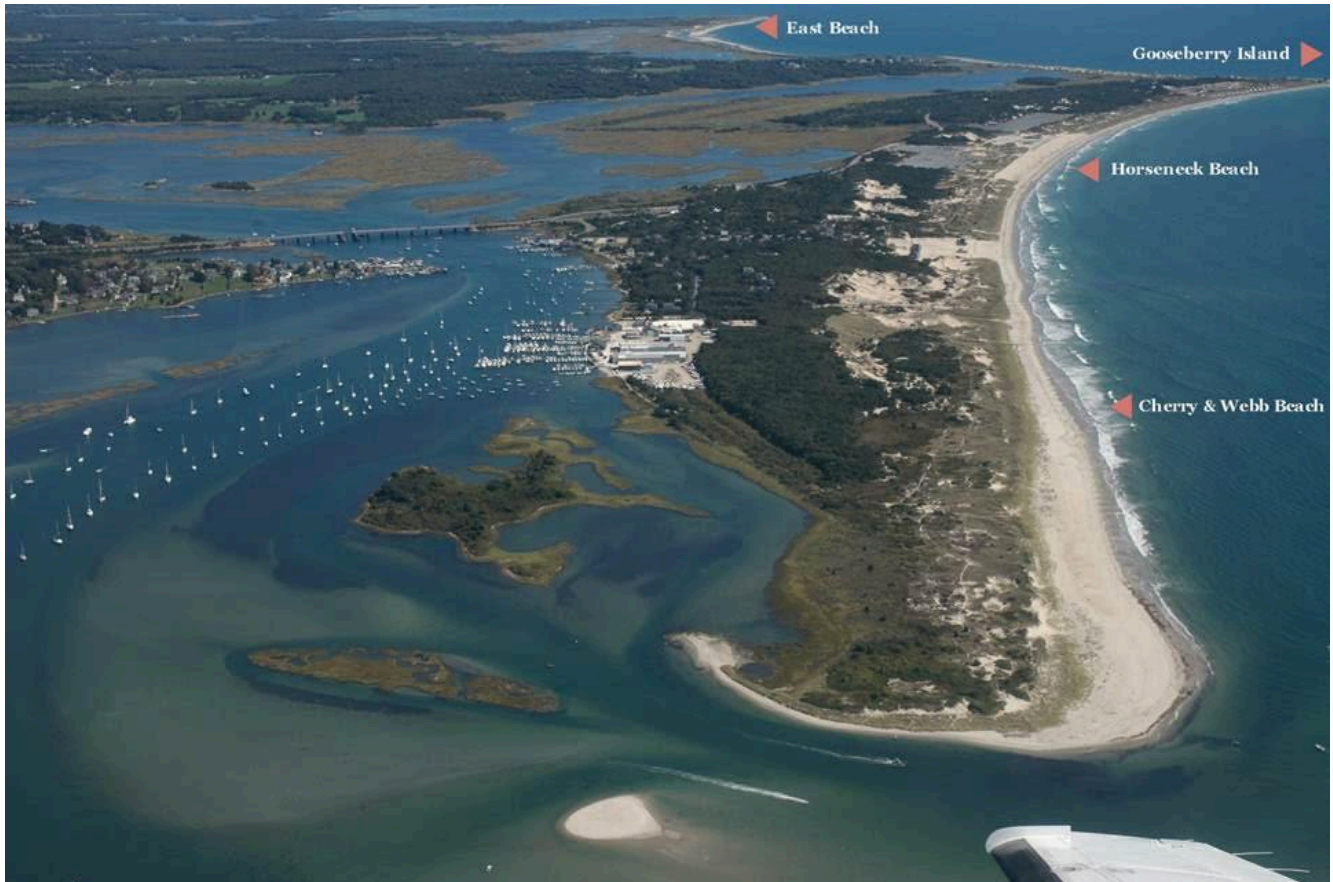
Brewing, the Westport Farm Market, and at Davoll's General Store weekly jam sessions. Their eclectic song repertoire includes the likes of Bob Dylan, John Prine, Grateful Dead, Lyle Lovett, Jerry Jeff Walker, Tom Petty, Doobie Brothers, Bonnie Raitt, Richard Thompson and many others...

Donated by: Mark Luttmann  
Mutually agreed upon date  
Market Value of Donation: \$300



E19

## Flight Over Westport



Enjoy an exciting and scenic hour aloft over Westport and the surrounding Southcoast area in Paul Maeder's Maule M7 single engine bush plane . You and a friend (two passengers total) will take off from a secluded airstrip in Westport and have the opportunity to see and photograph your home and neighborhood from a commanding perspective.

Donated by: Paul Maeder  
Mutually agreed upon date  
Market Value of Donation: \$750

E20

## Private River Boat Tour with Captain Bill and a WRWA Docent



Join Captain Bill Chace on his beautiful boat the Phoenix, for a Summer 2026 one hour river tour with up to 6 people, your friends or family. There will be a naturalist on Board who can point out some of the history of the area, what you might see from the River, and why we should all join together to appreciate and protect this glorious environment.

Donated by: Captain Bill Chace  
Mutually agreed upon date Summer 2026  
Market Value of Donation: \$500